

# April/May 2010 Provider Post

## April showers, bloom new providers.....

Dawn Paulini, Type B, Salem  
Tema Stewart, Type B, East Liverpool  
Danice Hambleton, Type B, East Liverpool



### Cell phones

2-14-21 - A working cellular phone shall not be used by a driver while the vehicle is in motion.

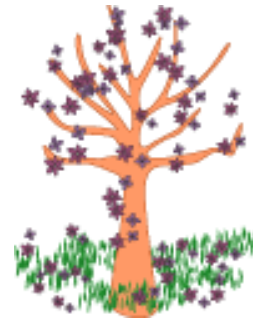
- Unless it is an emergency, all phone calls will be made to you on your landline telephone not your cell phone.
- Please keep in mind, child care should be provided in your home. Routine trips & field trips are expected but the majority of the care should not take place in your vehicle.



## **Outdoor play** 5101: 2-14-17

Providers are required to take the children outdoors each day in suitable weather. Please take the time to inspect your outdoor play area to assure proper compliance.

- Trampolines are prohibited.
- Outdoor play area must be away from traffic or protected by a fence.
- Must be protected from animals.
- Have access to bathroom & drinking water.
- Provide a shaded area. (trees, overhangs, umbrellas etc)
- Sandboxes must be covered when not in use.



### **Outdoor equipment**

- Be anchored/stable
- Climbing ropes must be anchored at both ends.
- Have all S hooks closed. (gap can not exceed .04 inch)
- Free of rust, cracks, splinters, peeling paint etc.
- No openings greater than 3 ½ in. but less than 9 in. to avoid entrapment of the head.
- Have protective barriers on platforms higher than 30 in.

### **Fall zone**

- Needed for equipment designated for climbing, swings, teeter-totters & slides
- Must be on the ground under & around the equipment.
- May be washed pea gravel, mulch, sand, wood chips or synthetic material.
- Equipment shall not be placed over concrete, asphalt, blacktop, dirt, rocks etc.



## **Inspections** 5101: 2-14-03

Jennifer Oliver, ext 3215

- Required at least twice within each 12 month certification period.
- A minimum of 1 inspection shall be unannounced.
- Provider must correct all compliance issues within 30 days of inspection.
- Please call Jennifer by deadline to report when you are in compliance.



## Ohio Booster Seat Law

Effective Oct. 7, 2009 / Full enforcement April 7, 2010

- Children less than 8 years old, unless they are at least 4 ft 9 in. tall must use a booster seat.
- Resources:
  - American Academy of Pediatrics Family Car Seat Guide  
<http://www.aap.org/family/Carseatguide.htm#BoosterSeats>
  - <http://www.carseat.org>
  - [www.odh.ohio.gov](http://www.odh.ohio.gov)
  - 1-800-755-GROW

## Billing & Reimbursements

- April 30, 2010 will be the last direct deposit from CCDJFS for child care services.
- Providers will continue to submit invoices to CCDJFS.
- Please refer to the updated 2010-2011 Child Care billing calendar at [www.columbianacountyjfs.org/forms](http://www.columbianacountyjfs.org/forms) (There are no longer due dates)
- The invoices will be processed by CCDJFS as they are received.
- CCDJFS can no longer guarantee reimbursement by the last business day of month.
- Reimbursements may be received sooner or later than in the past.

## End of school year

(According to district calendar on school's website)

Beaver Local	June 3	Lisbon	June 8
Columbiana	May 27	Salem	June 3
Crestview	June 3	Sebring	June 4
East Liverpool	June 7	Southern	May 28
East Palestine	June 3	United	June 3
Leetonia	May 26	Wellsville	June 4
		West Branch	June 9

### **ATTENTION:**

Listed below are the classes CCDJFS has available up thru this fiscal year (June 30, 2010) Once the contracts are negotiated, we will provide the trainings in the upcoming posts.

**Contact Information:**  
 Foundations of Knowledge  
**239 W. Lincoln Way**  
**Lisbon, OH 44432**  
**330-420-9288**

**Health & Safety Class**

New providers and/or emergency substitute caregivers must take Health & Safety  
prior to being approved.  
 Class Fee \$ 20.00 per person.

<u>CLASS</u>	<u>DATE</u>	<u>TIME</u>
<b>Session #1</b>	<b>5/4/10</b>	<b>6pm-9pm</b>
<b>Session #2</b>	<b>5/6/10</b>	<b>6pm-9pm</b>
<b>Test</b>	<b>5/11/10</b>	<b>6pm</b>

**Other locations:**

COAD  
 Center  
[www.coadinc.org](http://www.coadinc.org)  
 1-800-577-2276

Progressive Management Training  
  
 330-755-9796

Child Care Connections  
[www.childcare-connection.org](http://www.childcare-connection.org)  
 1-800-407-5437

Salem Public Library  
[www.salemlibrary.org](http://www.salemlibrary.org)  
 330-332-0042

Play n Learn Training Center  
<http://pnltraining.org>  
 1-800-811-0180

Schiappa Branch Library  
[www.steubenvillelibrary.com](http://www.steubenvillelibrary.com)  
 740-264-6166

Tru-Mah-Col  
[www.trumahcolaeyc.org](http://www.trumahcolaeyc.org)  
 330-637-1792

East Liverpool Hospital  
[www.elch.org](http://www.elch.org)  
 330-386-2670

Columbiana Co Red Cross  
[www.redcross.org](http://www.redcross.org)  
 330-424-6610

Carroll Co. Help Me Grow  
[www.ohiohelpmegrow.org](http://www.ohiohelpmegrow.org)  
 330-627-4357

Dianna Bleakley  
<http://diannableakleysearlychildhoodtrainings.homestead.com>