
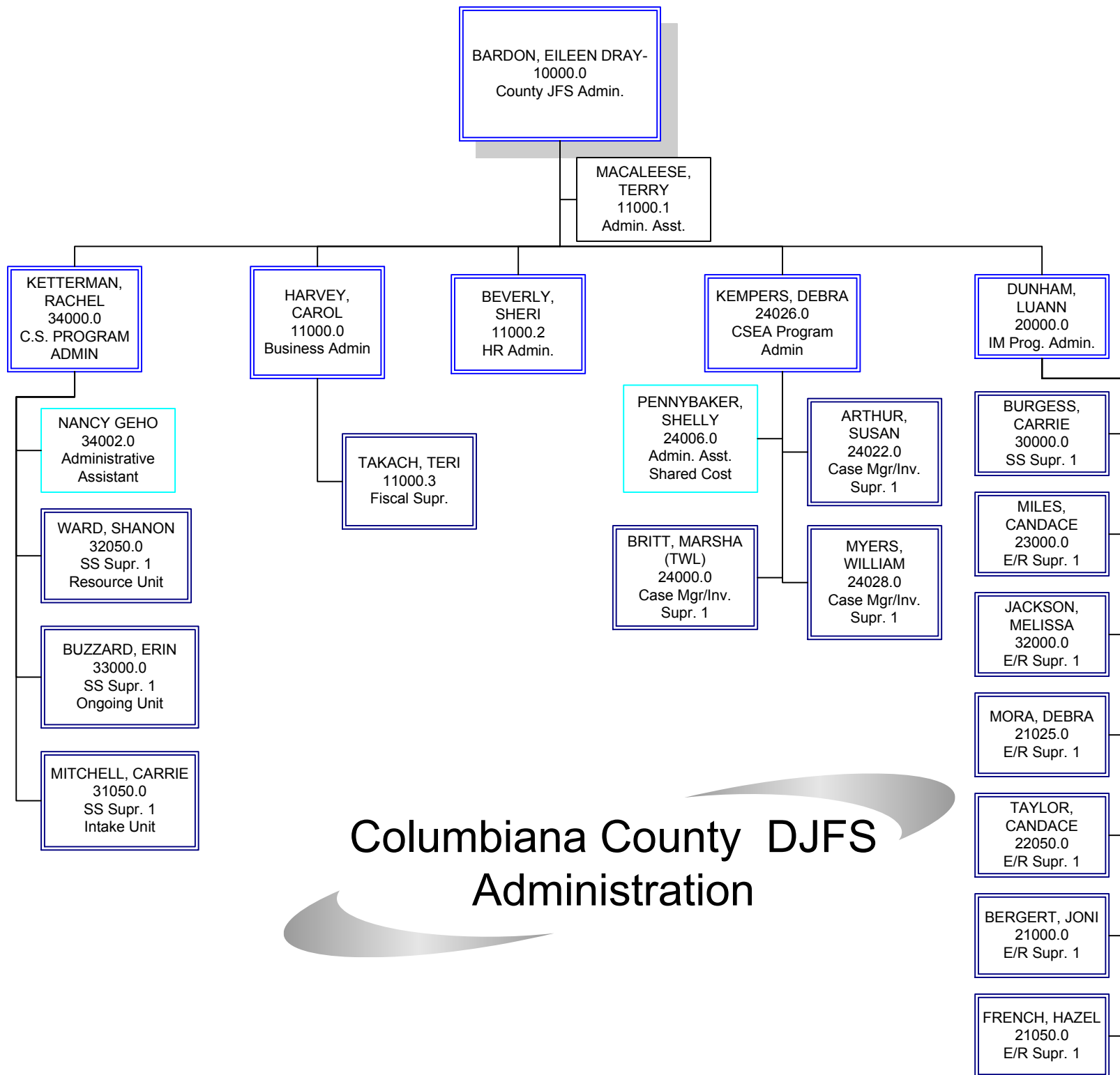




***COLUMBIANA COUNTY
DEPARTMENT OF JOB & FAMILY SERVICES
TABLE OF ORGANIZATION
2010***

*updated 07/13/2010
revised 7/14/10 sab*





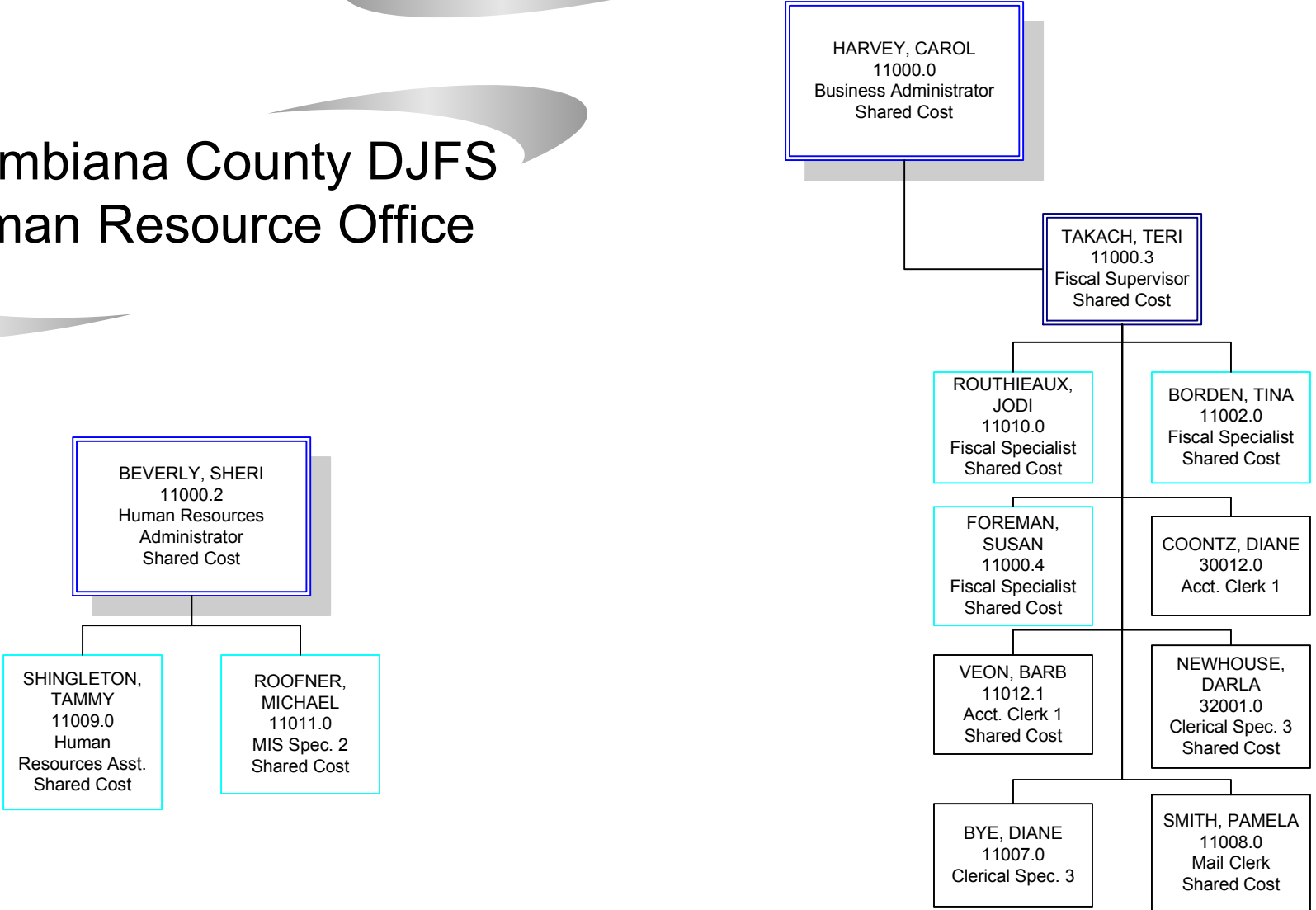
Columbiana County DJFS Administration

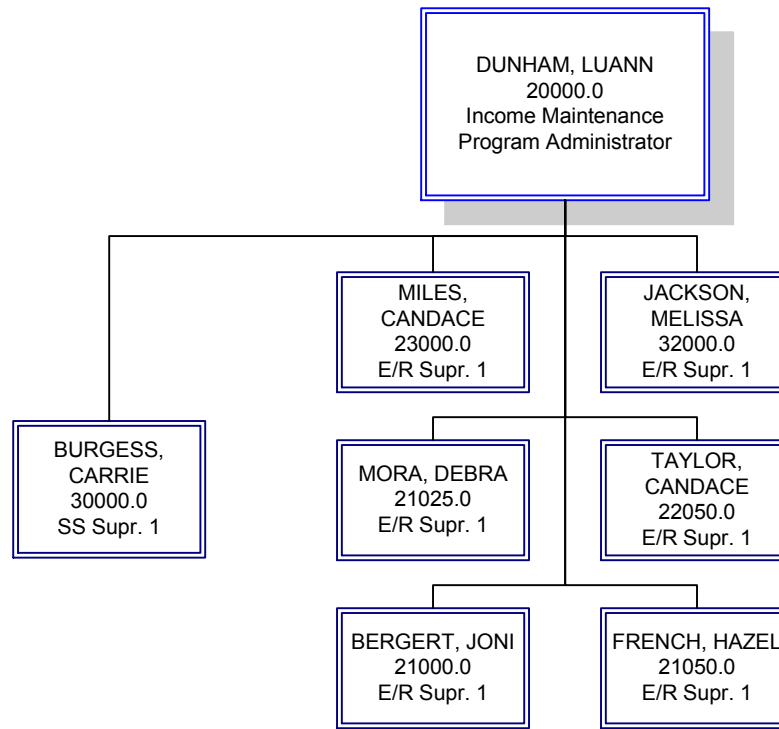
Columbiana County DJFS

Business Office

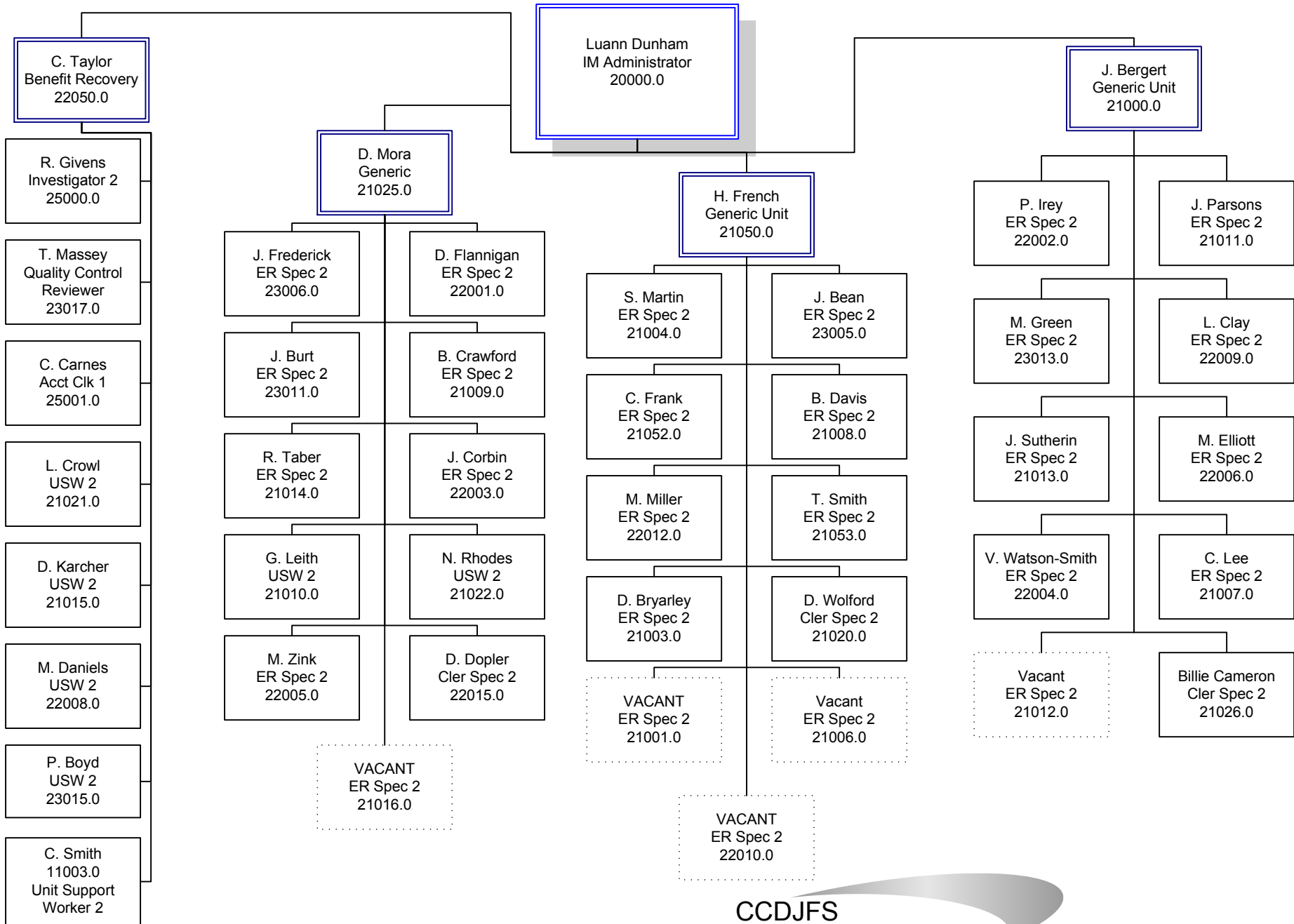
& Administrative Support (Shared Staff)

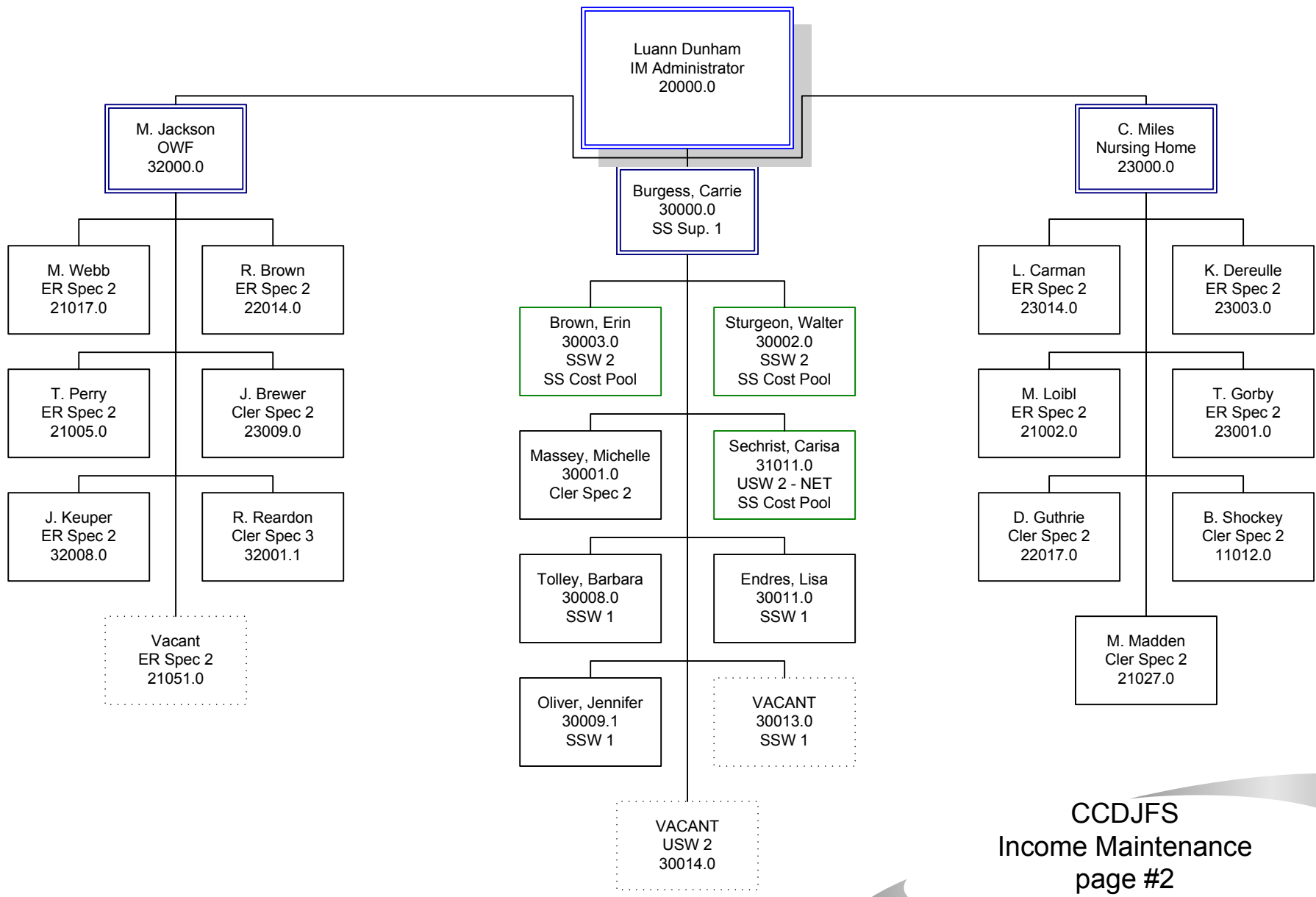
Columbiana County DJFS Human Resource Office

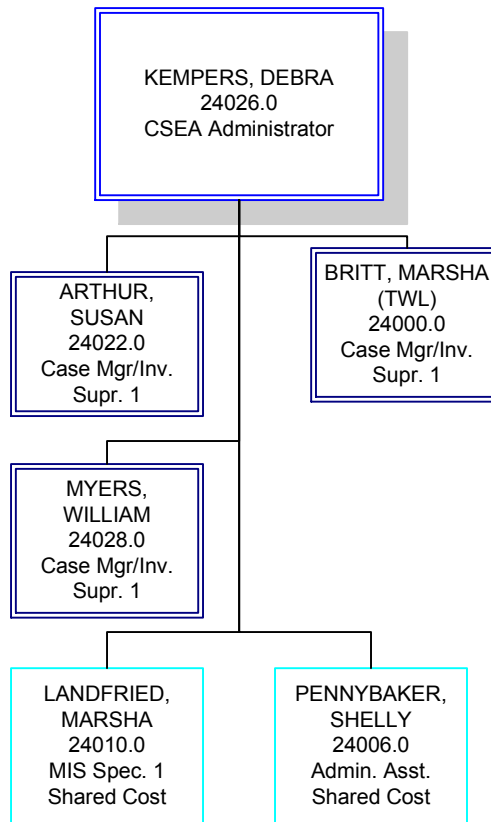




Columbiana County DJFS Job & Family Services Management







Columbiana County DJFS Child Support Enforcement Administration

CSEA Staff

Kempers, Debra
24026.0
CSEA Admin.

Britt, Marsha (TWL)
24000.0
Case Mgr/Inv. Supr.1

Pennybaker, Shelly
24006.0
Admin. Asst.
Shared Cost

Arthur, Susan
24022.0
Case Mgr/Inv. Supr 1

Myers, William
24028.0
Case Mgt/Inv. Supr. 1

Burchett, Billie
24003.0
Child Support Case Manager Lead

Farago, Amy
24003.3
Child Support Case Manager Lead

Landfried, Marsha
24010.0
MIS Spec 1
Shared Cost

Wellington, Charlene
24024.0
Hearing Officer

McGhee, Ellen
24021.0
Hearing Officer

VanDyne, Diane
24027.1
Child Support Case Manager

Huges, Cindy
24003.2
Child Support Case Manager Lead

Gitschier, Kimberly
24019.0
Child Support Case Manager

Frankford, Kathy
24018.0
Child Support Case Manager

Taylor, D.
24003.4
Interface Worker

Bates, Dessie
24001.0
Child Support Case Manager

Elliott, Susan
24005.2
Child Support Case Manager

Thompson, Deneen
24028.1
Child Support Case Manager

Russell, Georgetta
24005.1
Child Support Case Manager

Calko, Jennifer
24015.0
Child Support Case Manager

Keyes, Brenda
24009.0
Child Support Case Manager

Clutter, Robin
24004.0
Child Support Case Manager

Freeman, Joilyn
24002.0
Child Support Case Manager

Jarrett, Linda
24000.8
USW 2

Givens, Tamara
24000.2
Cler. Spec. 2

Senanefes, Barbara
24028.2
Child Support Case Manager

Engle, Amy
24011.0
Child Support Case Manager

Powers, Lareen
24000.1
Cler Spec 3

Weingart, Lisa
24016.0
Child Support Case Manager

Cox, Terry
24017.0
Child Support Case Manager

Eckert, Marissa
24000.6
Cler Spec 1

Myrick, Tawnya
24000.9
USW 2

Weingart, Lisa M.
24000.7
USW 2

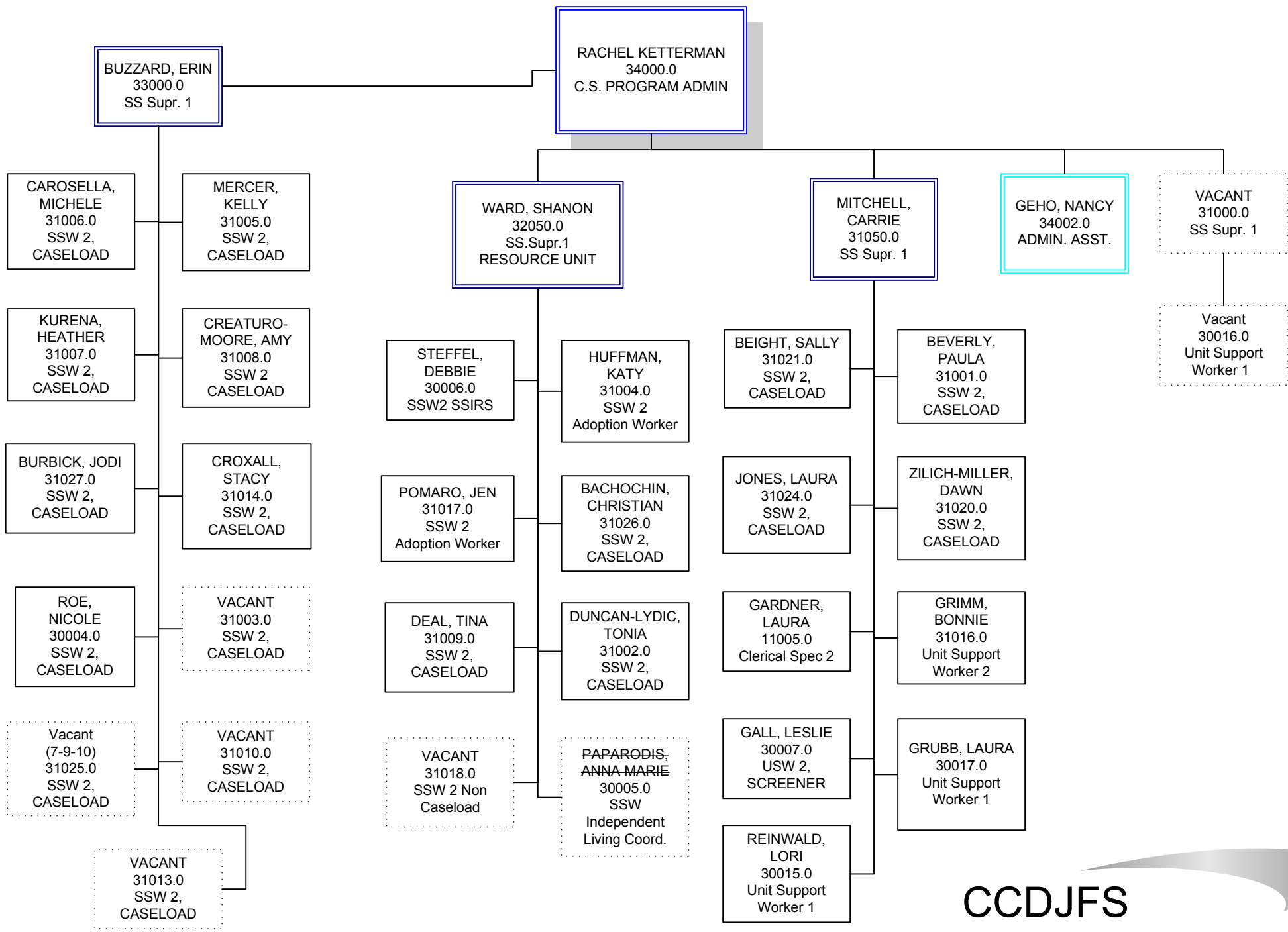
Raneri, Sue
24007.0
Cler. Spec 2

Pritchard, Lisa
24007.2
Child Support Case Manager

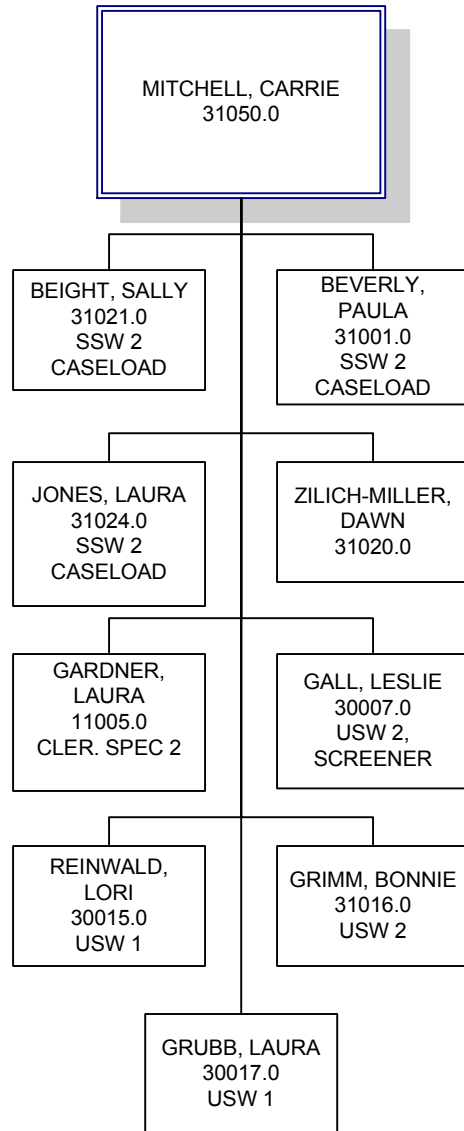
VACANT (7-12-10)
24014.0
Child Support Case Manager

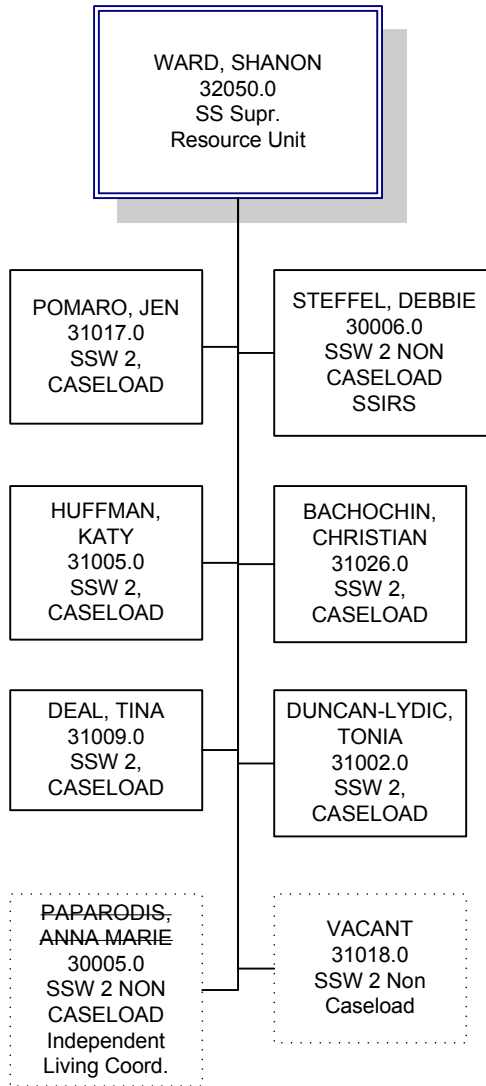
VACANT 01/11/2010
24027.2
Child Support Case Manager

Childers, Glenda
11006.0
Legal Spec



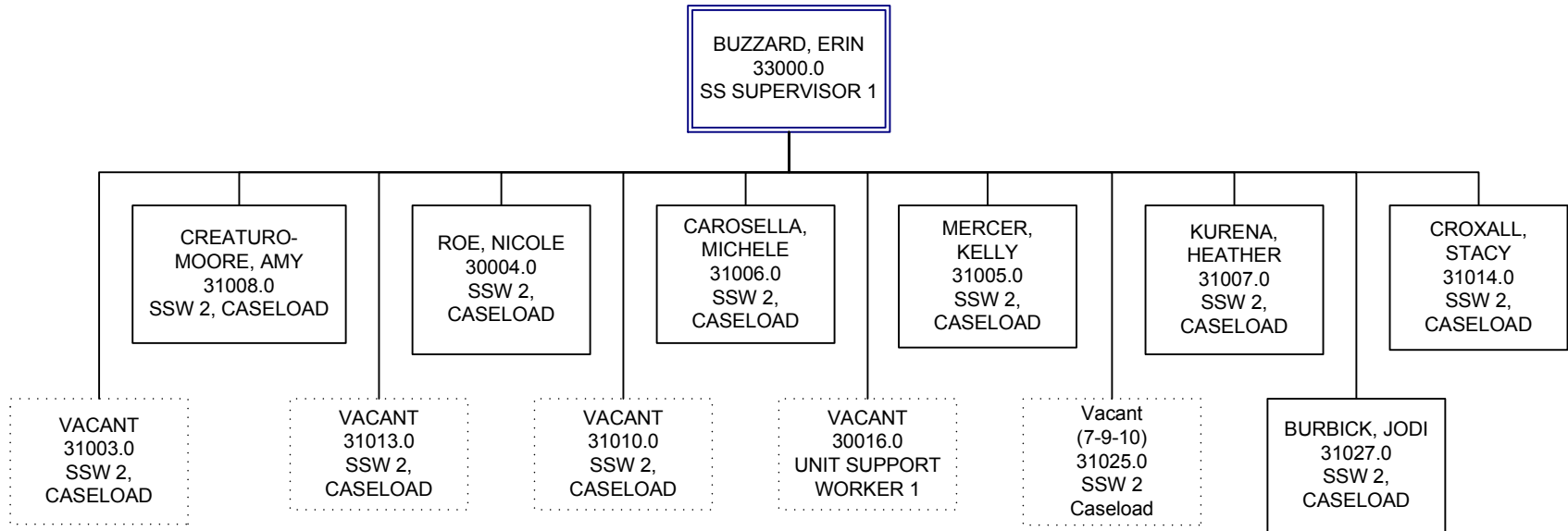
CCDJFS Children Services Intake Unit





CCDJFS

Children Services Resource Unit



VACANT
31000.0
SS
SUPERVISOR 1

CCDJFS Children Services Ongoing Unit