

**STRENGTHENING  
COLUMBIANA COUNTY  
FAMILIES**

**COLUMBIANA COUNTY  
JOB AND FAMILY SERVICES  
2009 ANNUAL REPORT**

**2009 County Commissioners**  
Penny Traina, President  
James Hoppel  
Daniel Bing

**Our mission at Columbiana County Department of Job and Family Services is to work together to assess & understand the needs of our community, to facilitate independence, and to provide appropriate services in a caring and compassionate manner.**

**Message  
From  
the Director**

The state of the economy and the budget of the state in 2009 combined to create unprecedented challenges to CCDJFS operations. Faced with an ever increasing need for our services and cuts in nearly every operating fund line item, we stream-lined wherever we could, re-assessed every expenditure, and primarily through attrition, reduced our workforce by 10%. Unsettling as this has been for us, I have never been more proud of the way the CCDJFS staff has worked together to solve problems and provide support to our community. – Eileen Dray-Bardon, Director

May was Employee Appreciation Month



Bar Association donation to foster children



CCDJFS and the Community Action Agency jointly sponsor Farmers and Hunters Feeding the Hungry. In 2009, local hunters donated 90 deer to both agencies' food pantries.



Staff donated 24 pints of blood in the Annual Blood Drive. The goal was 20 pints.



August was Child Support Awareness Month (Beaver Creek Family Day; Book Bag Give-away).



Relay for Life Breakfast with Santa

Administrative and Program Expenditures	
<b>Administration</b>	
Shared	\$ 1,286,329.20
Income Maintenance	3,083,902.60
Social Services	1,811,516.92
Child Support	1,641,633.17
<b>Subtotal</b>	<b>\$ 7,823,381.89</b>
<b>Purchased Services</b>	
IM/TANF	1,086,473.99
Help Me Grow	340,971.03
Social Services	59,043.05
Child Care	5,095,915.01
Child Support	309,017.35
<b>Subtotal</b>	<b>\$ 6,891,420.43</b>
<b>Assistance Expenditures</b>	
Ohio Works First / TANF	2,394,903.00
Prevention, Retention, Contingency (PRC)	632,652.35
Disability Assistance	265,872.00
DA Medical	82,391.00
Food Assistance	23,855,145.00
Aged Medicaid	29,565,523.00
Blind Medicaid	220,520.00
Disabled Medicaid	62,274,189.00
OWF / Transitional / Healthy Start	473,425,295.00
<b>Subtotal</b>	<b>\$ 592,716,490.35</b>
<b>Grand Total</b>	<b>\$ 607,431,292.67</b>
County Share of Total (Mandated Share)	290,192.78
Administrative Cost (as percent of total)	1.29%
County Share (as percent of total)	0.00%

CY 2009 Contracted Services		
Family Services:	Jan-Jun Expenditures	Jul-Dec Expenditures
Parent/Family Support Programs	\$ 448,120	\$ 77,716
After School Programs	234,395	58,354
Teen Pregnancy Prevention	73,596	
Truancy/Juvenile Law Enforcement	64,754	18,744
Domestic/Family Violence Programs	28,923	28,332
Family Legal Services	15,114	
Family Respite Services	11,344	8,455
Public Guardian Services	10,910	3,650
Guardian Ad Litem Services	2,847	
<b>Community Services:</b>		
Life Skills/Success Programs	58,823	8,794
Homemaker/Home Repair Services	25,876	10,776
Lice Eradication Services	9,906	15,408
Representative Payee Program	7,743	
Financial Literacy Program	6,993	
Medicaid Outreach Program	3,730	6,703
Child Safety Seat Programs	3,513	1,220
<b>Job Services:</b>		
Employment/Employee Retention	62,371	24,430
<b>Total Expenditures:</b>	<b>\$ 1,068,958</b>	<b>\$ 262,582</b>

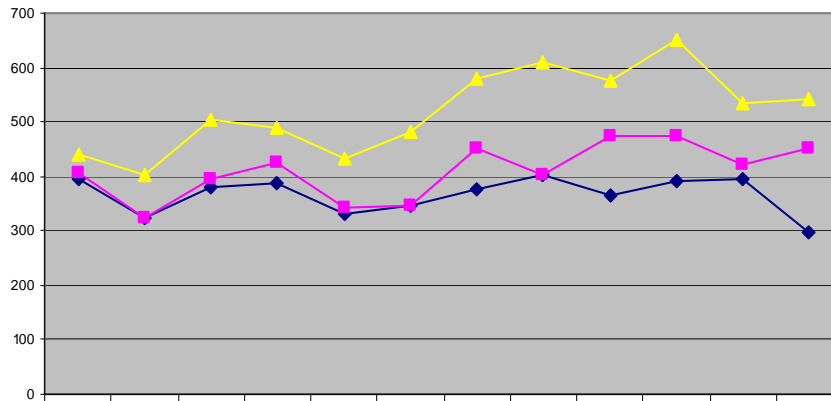
## Public Assistance Department

*The challenge of 2009: funding decreased...*

*as the needs of the community increased—*

Avg. # of initial applications for assistance taken per month in 2009 – 520. Of these, 132 per month (25%) were taken at the satellite office in East Liverpool.

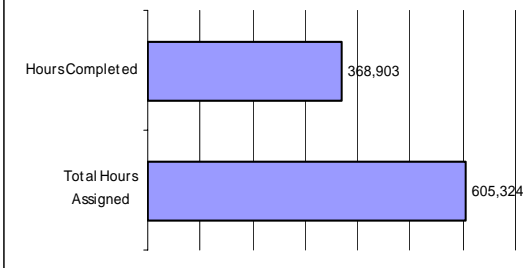
**Initial FA, OWF, and Medicaid Applications**



2007 Initials	396	324	379	388	333	345	378	401	364	391	395	296
2008 Initials	407	325	397	425	344	348	453	404	473	473	420	453
2009 Initials	441	401	506	490	433	480	578	608	576	651	535	541

Avg. Food Assistance (FA) recipients per month: 15,284  
2009 total FA: \$24 million  
2008 - \$16 million

**Hours Worked for Cash Assistance**



**Ohio Works First (OWF)**

657 county households (776 people) participated in OWF assignments.  
61% of the work hours assigned for cash assistance were completed.

Total Medicaid expenditures for 2009—  
\$141,270,986.00

**Nursing Home Services**

There were an average of 602 elderly citizens per month in Medicaid subsidized Nursing Home placements.

Total Medicaid expenditures for nursing facilities was \$26,764,517.00.



**Medicaid Services**

**Expenditures**

Children	\$15,112,717.00
Aged	\$29,565,523.00
Disabled	\$62,494,709.00
Families (OWF/Related)	\$39,319,660.00

2008 PRC Expenditures were \$1,166,199.00. September–December 2009 PRC expenditures were significantly reduced due to reductions in allocations.



**Top 3 needs in 2009:**

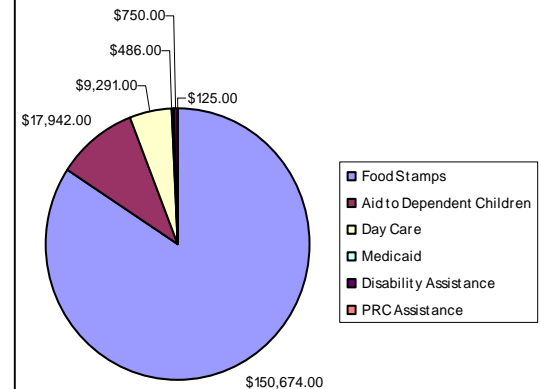
Car repairs	\$233,000
Shelter	\$223,000
Transportation	\$130,000

**Benefit Recovery**

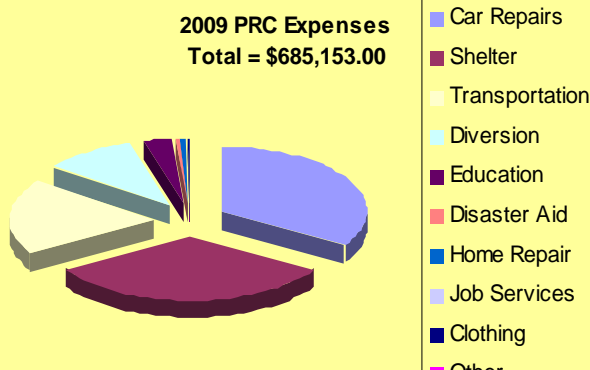
309 “Concerned Citizen” reports regarding fraud were investigated.

31 individuals were disqualified from receiving food stamps and/or OWF for intentional program violations.

\$179,268.00 in overpayments was recovered.

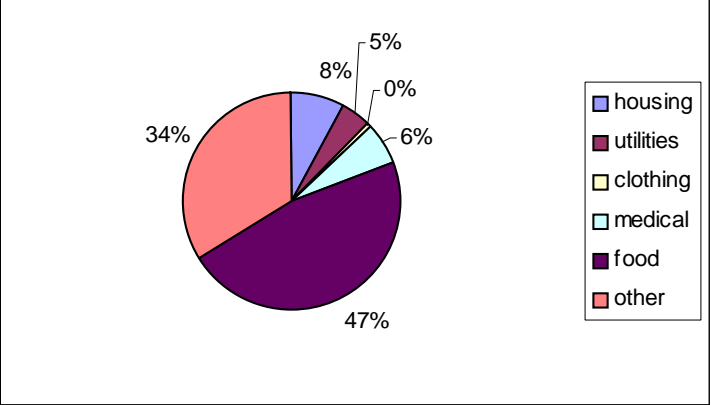


**2009 PRC Expenses  
Total = \$685,153.00**



**Information and Referral (I&R) Services**

There were 1,309 requests for assistance



**Child Care**  
 1,062 families received child care services (1,837 children)  
 Total expenditures – \$5,105,270.00

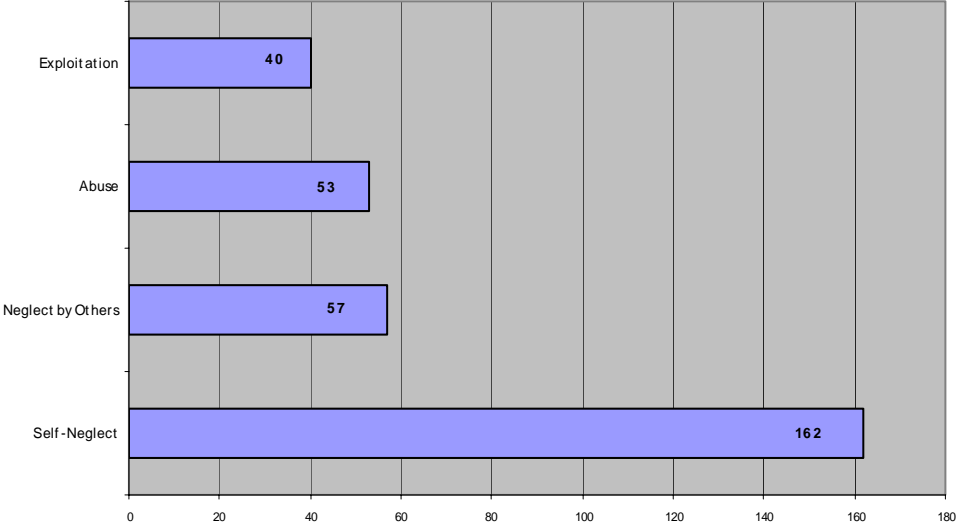


**Non-Emergency Transportation (NET)**  
 Avg. # of unduplicated clients per month – 384  
 Miles driven in 2009 – 683,086  
 (avg. of 56,924 per month)  
 2009 expenditures—\$905,238.00  
 (avg. of \$75,437.00 per month)

**Adult Protective Services (APS)**  
 In 2009, there were 312 reports of elderly abuse. Of those, 216 or 69% were validated.

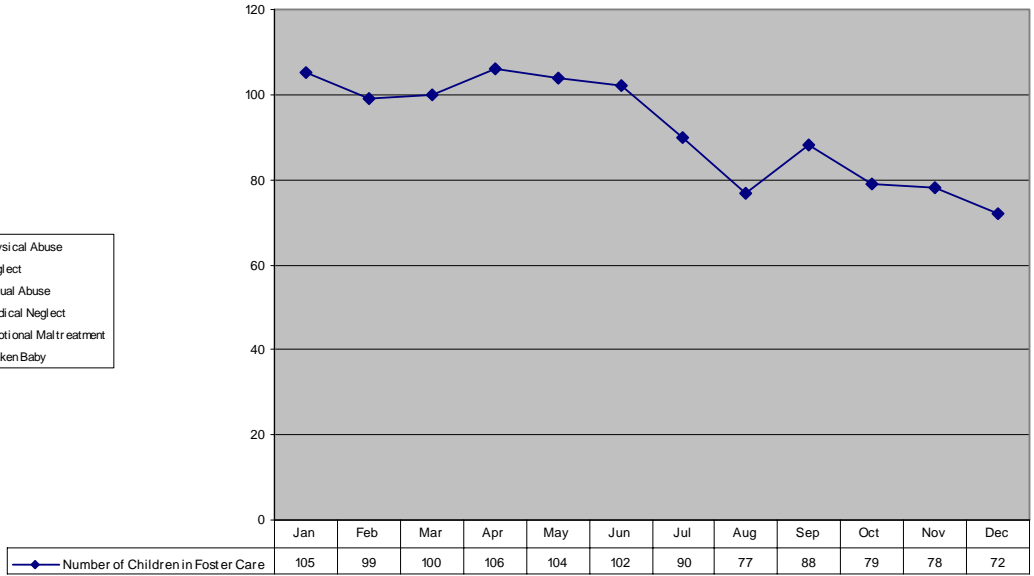
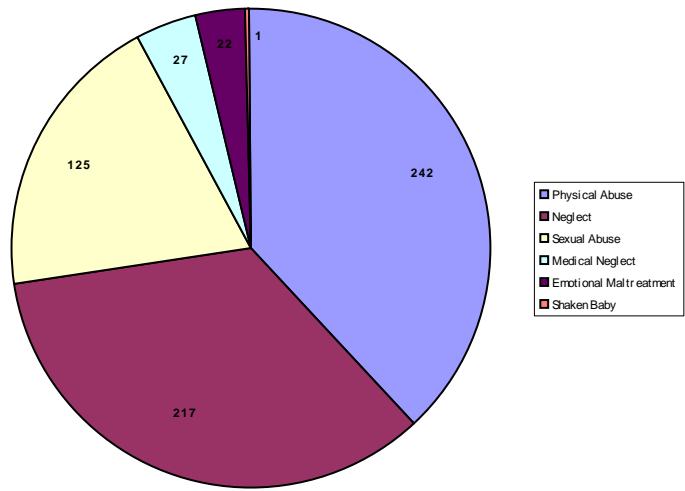


**CCDJFS Food Pantry**  
 539 households were served  
 (809 adults and 583 children)



# Children Services Division

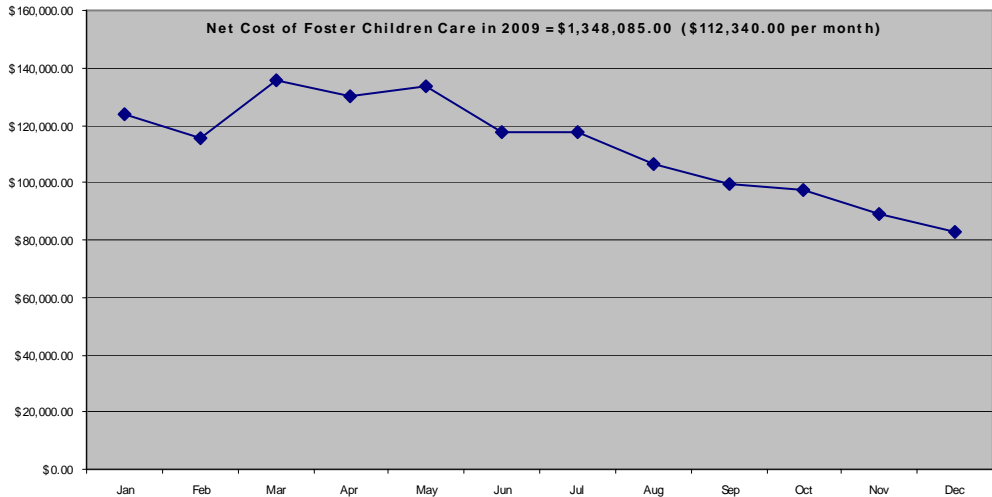
The department received 2,257 referrals—there were 634 dispositions reached from child abuse and neglect investigations. The types of abuse and neglect cases investigated are shown at the right. 859 families were served.



116 children were placed in the agency's temporary custody – 16 went from temporary to permanent custody. 25 children were placed in the agency's permanent custody. 8 adoptions were finalized.

A total of 29 foster/adoptive homes were licensed – 10 of them were new in 2009. 65 relative home studies were completed.

**Kyes Family Service Center**  
 In 2009, fundraising was postponed in order to spend time educating the public about the changes at the Kyes Home and the new services which would be provided. \$2,408.00 in donations was received. Plumbing repairs and the cost of renovations at the home for the new Family Service Center totaled \$3,975.00. The year-end balance in the Caring for Kyes fund was \$17,699.59. The committee is planning on removing the slate roof and replacing it with shingles in 2010. Fundraising efforts are in place for 2010 with the Annual Penny Drive in April and the Annual Auction in October.



Levy Fund CY 2009 Revenues	
Tax collections generated by current levy	\$ 1,073,237.71
Miscellaneous	10.00
<b>Total CY 2009 Revenues</b>	<b>\$ 1,073,247.71</b>
Levy Fund CY 2009 Expenditures	
Kyes Employee Salaries & Associated Costs	16,265.97
Kyes Operations (util., supplies, advertising, misc.)	5,108.88
Kyes Miscellaneous Maintenance	404.99
Transfer to PCSA Fund for county share of expenses for foster care and adoption of children in agency custody	1,066,000.00
<b>Total CY 2009 Expenditures</b>	<b>\$ 1,087,779.84</b>

## Child Support Division

The mission of the Columbiana County Child Support Enforcement Agency is to work diligently to provide support services in a respectful and professional manner.

### 2009 Statistics

- ◆ 37 CSEA Employees managed 11,821 cases
- ◆ Paternity was established for 136 children
- ◆ Child Support Orders were established for 518 cases
- ◆ Total Support Collected was \$19,219,768.00

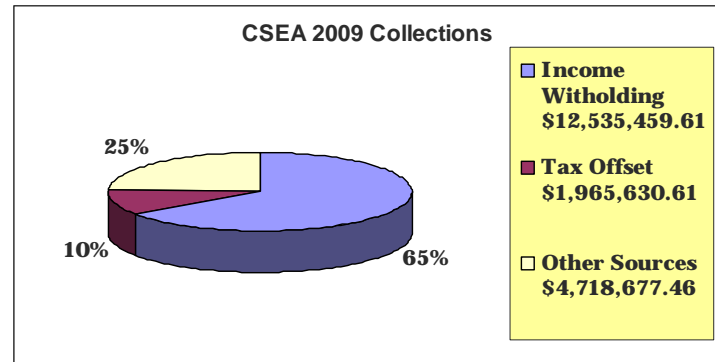
### Community Outreach

In 2009, Columbiana County CSEA, again, partnered with other area agencies to sponsor the 2<sup>nd</sup> Annual Beaver Creek State Park Event.

The event, 'Explore the Outdoors With Your Family Because Time Together Counts,' focused on encouraging families to spend time with their children. CSEA's goal was to relay the message that spending time with your child is a very important element in supporting your child. The day was full of interactive events, displays, and activities.

Approximately 500 area residents participated.

### CSEA 2009 Collections



### 2009 DJFS Planning Committee

Karen Arbogast—Family & Children First Council  
Pat Baumgarner—Mental Health & Recovery  
Carol Bretz—Community Action  
Bert Cene—Mahoning Columbiana Training Assoc.  
Tracy Drake—Columbiana County Port Authority  
Eileen Dray-Bardon—CCDJFS  
Carol Harvey—CCDJFS  
Pam Hoppel—East Liverpool Chamber of Commerce  
Jana Keuper—CCDJFS (AFSCME)  
Barbara Lynch—East Palestine, Ohio  
Roger Sikorszky—Counseling Center  
Tom Snow—Columbiana Metropolitan Housing Authority  
Kimberly Steele-Simmons—Kent State University  
Denise Taylor—East Liverpool Community Resource Center  
Eloise Traina—Family Recovery  
Anna Marie Vaughn—Educational Service Center  
Tom Volino—Shining Reflections  
Rev. Mark Wilds—New Lisbon Presbyterian Church  
Michelle Wrona-Fox—Community Legal Aid

### Agency Contact Information

#### Columbiana County Department of Job and Family Services

110 North Nelson Avenue

Lisbon, Ohio 44432

Phone: 330-424-1471 Fax: 330-424-0925

#### Children Services Division

Phone: 330-424-7781 Fax: 330-424-0931

Help Hotline: 330-424-7767

#### Child Support Enforcement

Phone: 330-424-7781 Fax: 330-424-0931

Toll Free: 800-353-0125

#### One Stop

Phone: 330-424-7006

#### Hours of Operation

Monday–Friday: 8:00 am–4:30 pm

#### Extended Hours Available

1st and 3rd Thursdays of each month: 8:00 am–6:30 pm

### CCDJFS Staff

In 2009, the number of CCDJFS employees decreased from 159 in January to 144 at the end of December (a 9% decrease in staff). 4 staff members retired: Judy Fannin with 40 years of service; Barb McDade with 27 years; Marty Cramer with 23 years; and Sandi Hawkins with 15 years. With the challenges of a struggling economy and a decreasing budget, 1 full-time CSEA employee and 1 part-time Children Services worker had to be laid off. These and other vacancies which occurred during the year have not been filled.

The CCDJFS 2009 Relay for Life Team participated in Lisbon's Annual Relay for Life Event held on June 26th & 27th.

The team won several awards including:

Best Decorated Tent

2nd Place Best Educational Message

Best Banner

Most Money Raised On-line by Team & by Individual  
and

2nd Place for the Most Money Raised Overall (\$3,450)

